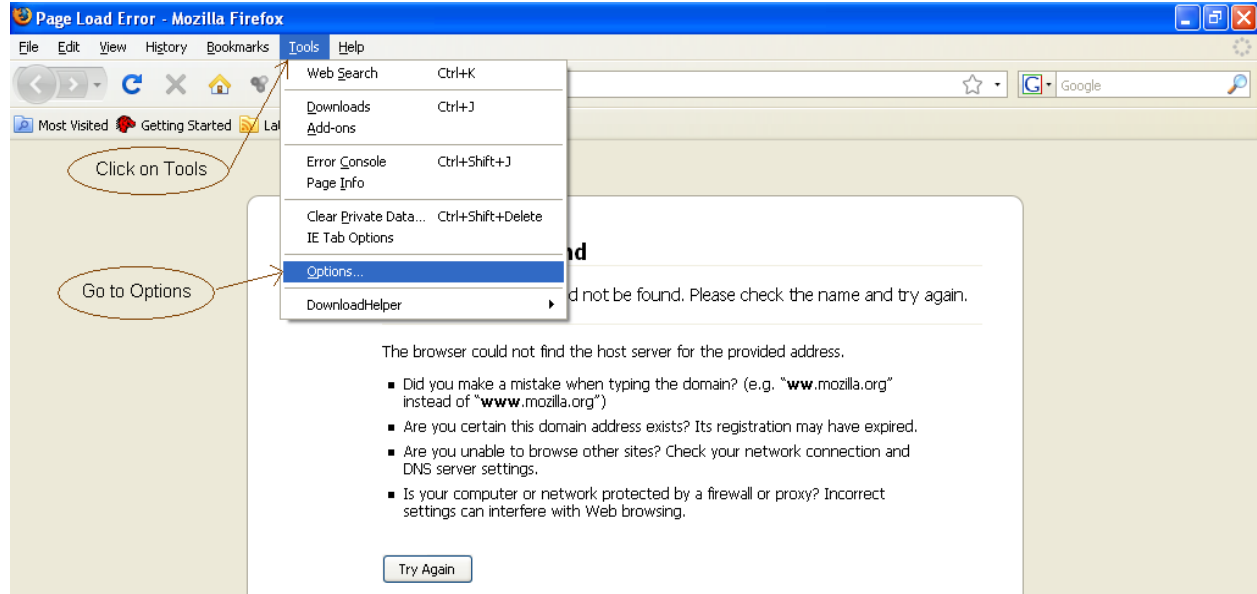
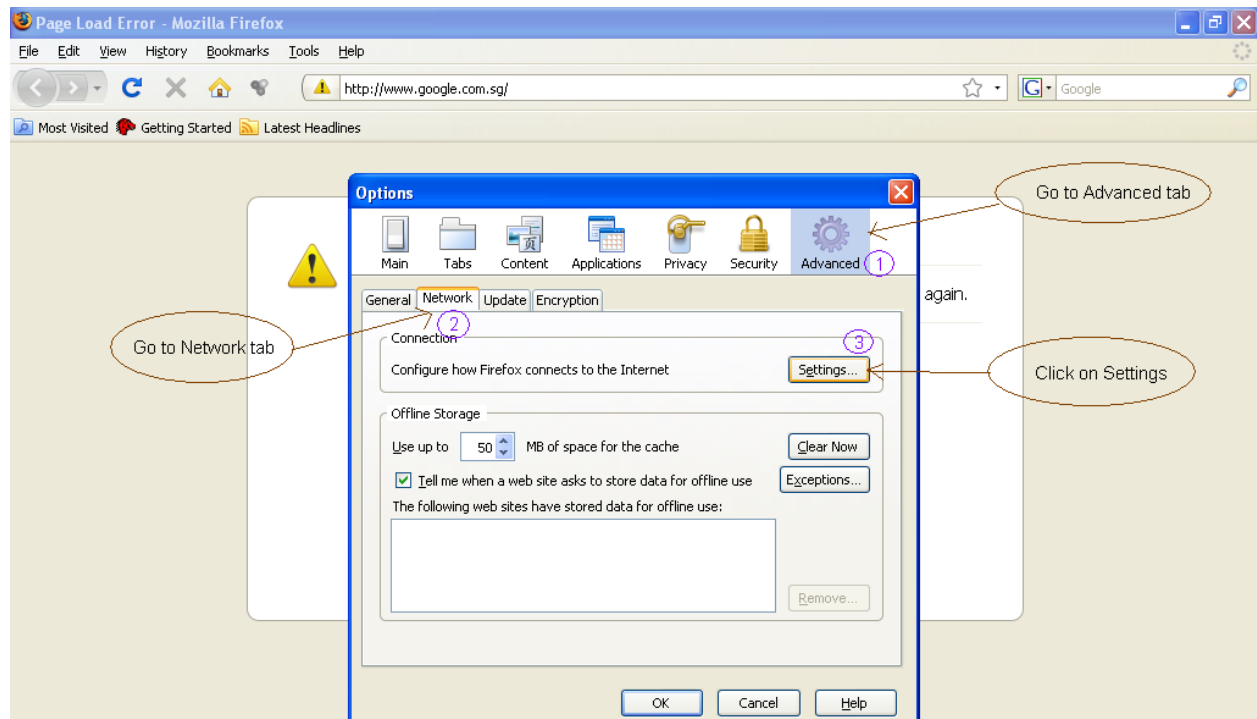


Proxy Setup for Mozilla Firefox

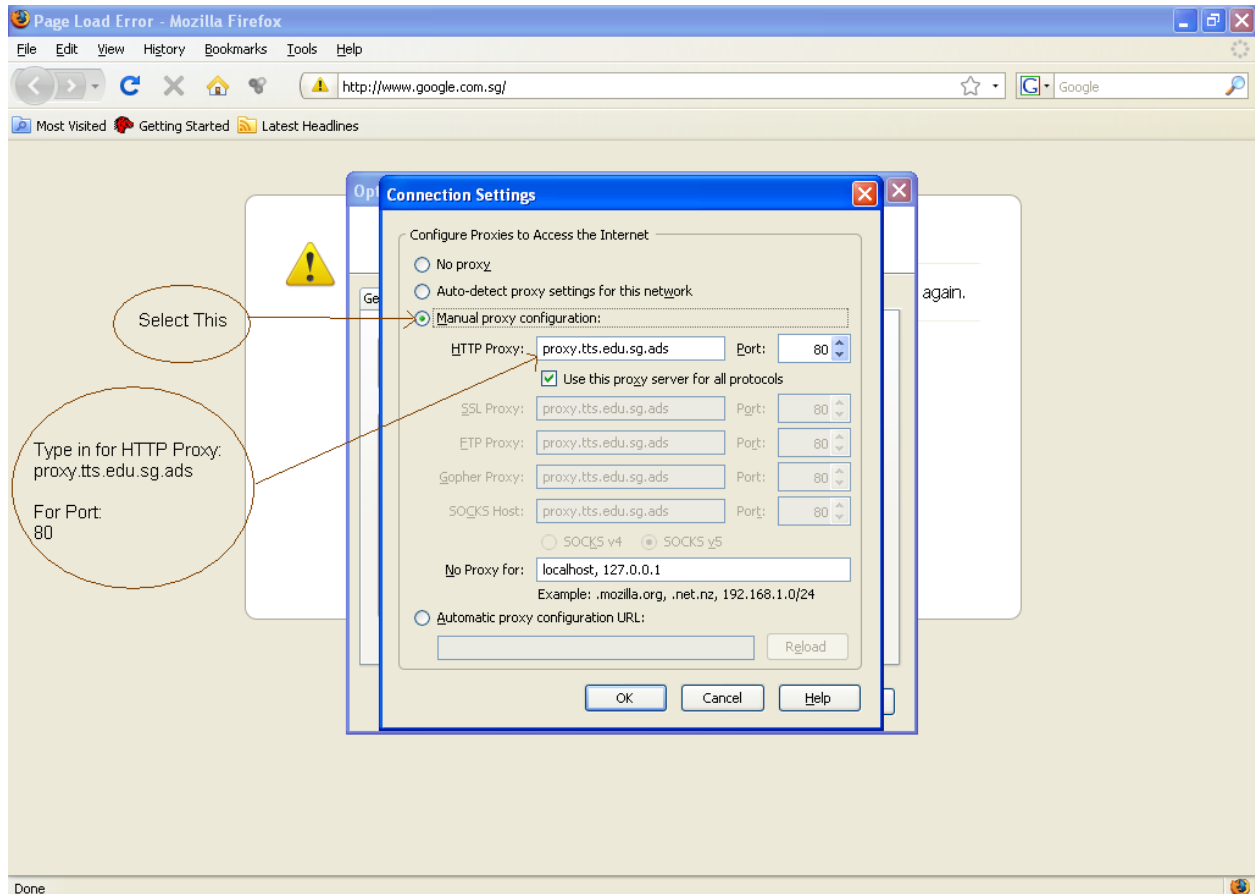
1) Launch Firefox, go to Tools and click on Options



2) Click on the Connections tab and then LAN settings.



- 3) Select on “Manual proxy configuration”
Enter **proxy.tts.edu.sg.ads** for HTTP Proxy and **80** for Port.
“Use this proxy server for all protocols” should then be checked.



- 4) Click OK all the way till you are at the Firefox main page.
Refresh the page or type the address of the website that you want to access and you should be in.

-----End-----