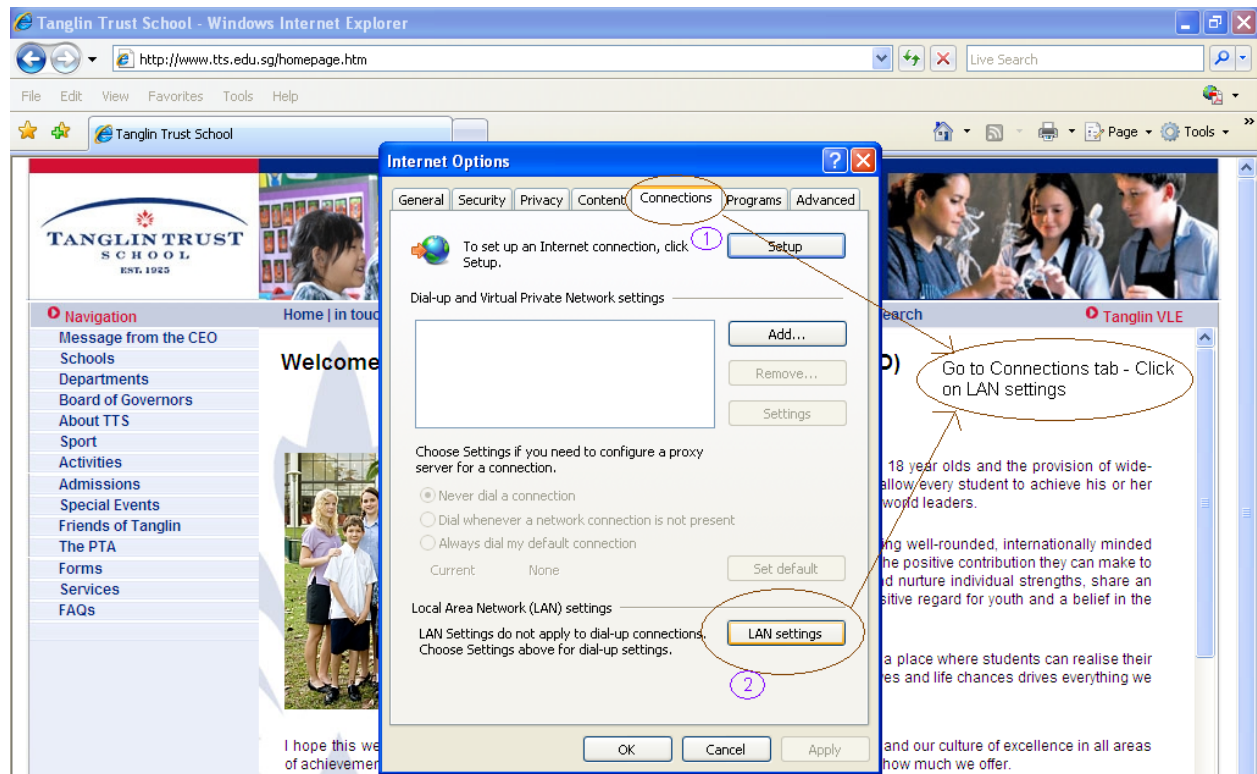


Proxy Setup for Internet Explorer

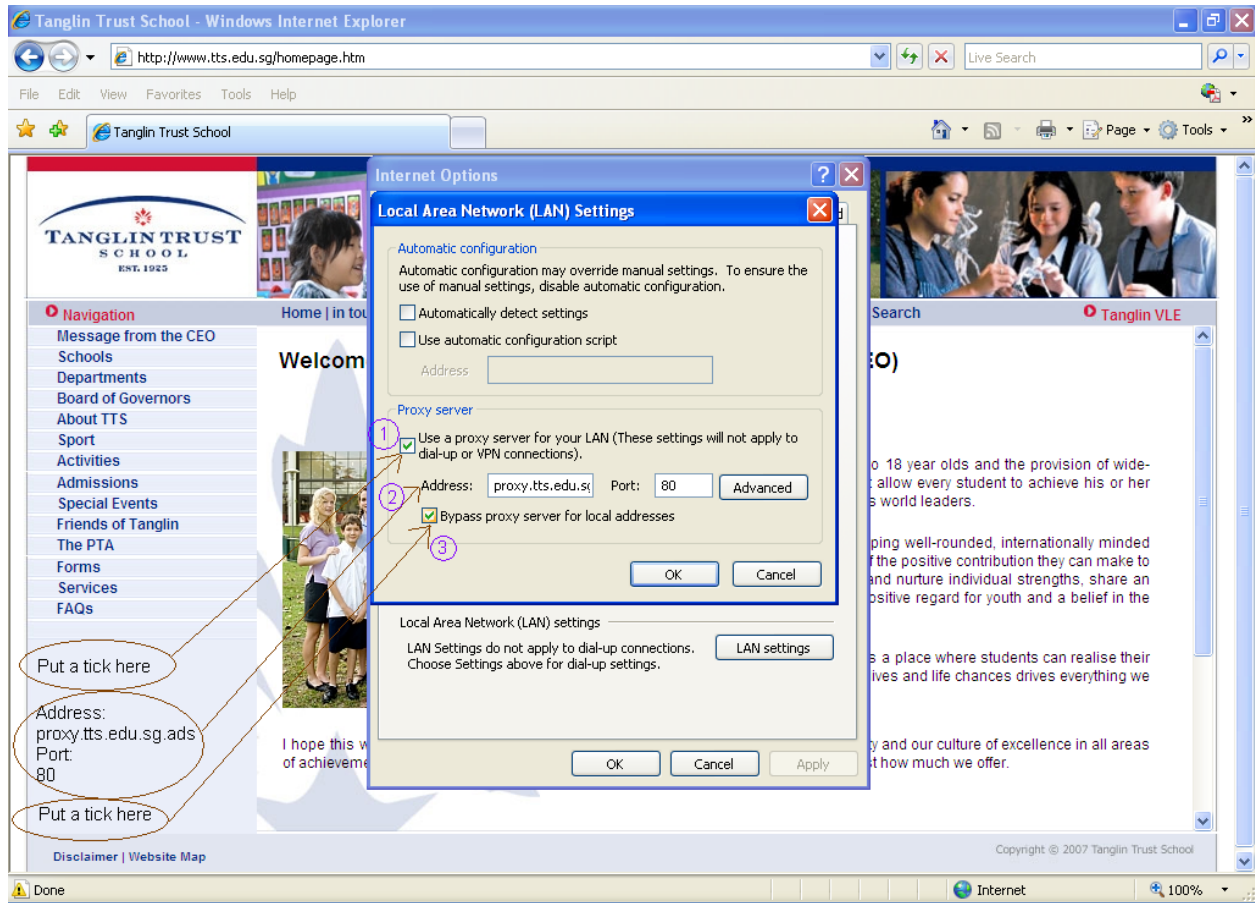
1) Launch Internet Explorer, go to Tools and click on Internet Options



2) Click on the Connections tab and then LAN settings.



- 3) Check on "Use a proxy server....."
Enter **proxy.tts.edu.sg.ads** for Address and **80** for Port.
Check on "Bypass proxy server..."



- 4) Click OK all the way till you are at the Internet Explorer main page.
Refresh the page or type the address of the website that you want to access and you should be in.

-----End-----